

PULP AND PAPER

INDUSTRY SOLUTIONS AND SERVICES



The background image shows a complex industrial facility with various pipes, valves, and machinery. A semi-transparent white box is overlaid on the right side of the image, containing text. The floor is covered with a metal grating.

Understanding today's plant challenges

- Aging Infrastructure
- Energy Consumption
- Cost of Maintenance
- Water Consumption
- Environmental Regulations
- Safety

Time and Energy Saving Solutions You Can Count On

Chesterton® is a full-solutions provider for pulp and paper mills and understands energy, efficiency, reduced water consumption, and downtime are key cost differentiators in the industry. Through our network of local service centers, we will work with you to develop innovative solutions that meet your mill's needs and help drive improvements in equipment reliability and operational efficiency.

Your Sustainability Goals Are Important to Us

Chesterton's plant-wide solutions and Water Management Program can help you meet sustainability goals and targets while maintaining aging infrastructure.

- Programs to minimize water consumption, optimize energy efficiency, and improve equipment reliability
- Sealing systems for pumps, agitators, refiners, feeders, and other rotating equipment
- ARC Industrial Coatings for corrosion and wear protection and the rehabilitation of concrete and metal surfaces
- Training to support the plant's most critical assets—its people



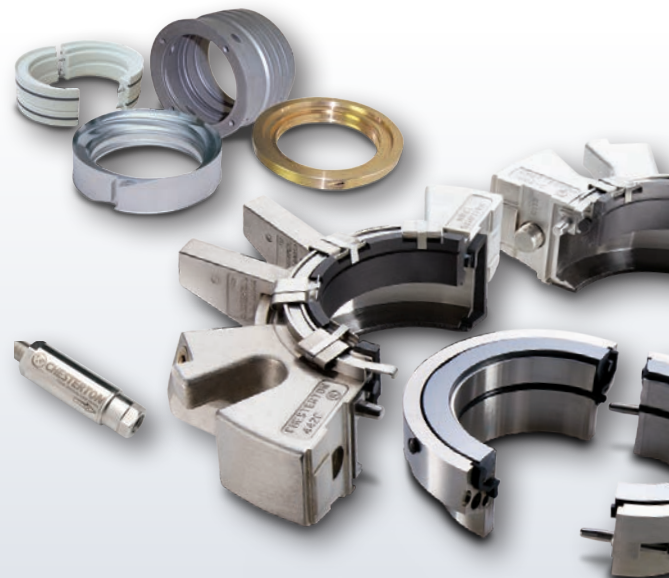
Manage Water Consumption

REDUCE DOWNTIME WHILE INCREASING EQUIPMENT RELIABILITY

Chesterton can help you manage your plant's critical assets with innovative solutions, knowledge, and on-site services. Our variety of sealing devices and equipment monitoring technology help tackle your plant-wide sealing needs while saving you time and money.

Achieve More Reliable Sealing of Pumps, Mixers, and Agitators

Chesterton provides sealing solutions for all your equipment needs. Our split seal technology adds measurable productivity improvements by eliminating equipment disassembly during seal replacement. Chesterton® seals significantly reduce seal water usage with the innovative SpiralTrac® environmental controller and flow controller.



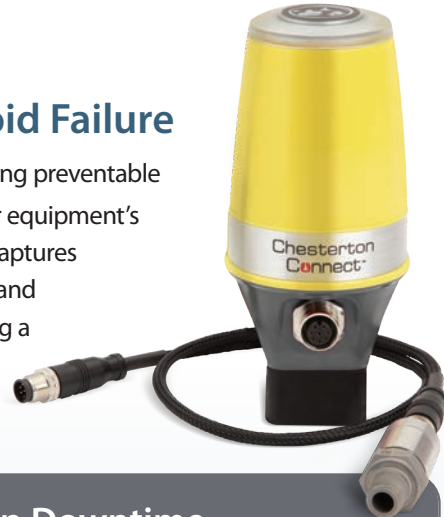
Reduce Packing Adjustments and Repacking

Our plant-wide packings help lower the frequency of flushing, reduce sleeve wear, and minimize gland adjustments and repacks. Advanced supersets featuring DualPac® pump packings offer high resiliency, which prevents loss of load through consolidation or extrusion. Fewer adjustments help to delay bottoming out and help increase the life of the packing.

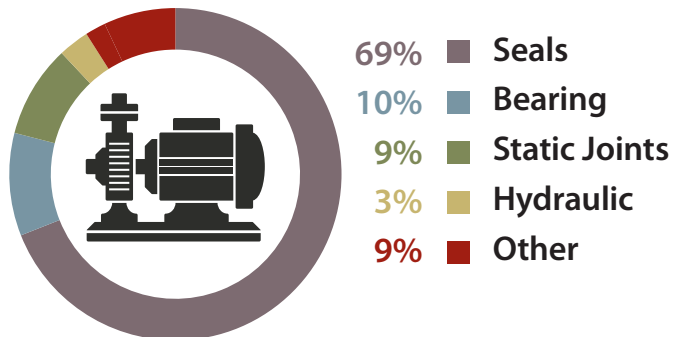
Reduce Maintenance Costs

Identify Equipment Issues Early to Avoid Failure

Predictive maintenance can generate substantial savings by reducing preventable equipment downtime. Chesterton Connect™ sensors monitor your equipment's health 24/7 so your staff doesn't have to. The IIoT sensor securely captures real-time process temperature and pressure, surface temperature, and vibration to provide early detection of potential problems. Avoiding a single failure can save hours of labor and downtime.



Causes of Pump Downtime



According to Magazine and the FSA Mechanical Seal Technical Committee.



Bearing Protection that Outperforms Conventional Lip Seals

Increase the life of your equipment with the Chesterton Split Polymer Labyrinth Seal. Reduce the chance of shaft fretting and wear caused by lip seals. The unitized design and durable material allow for quick and reliable installation, thus minimizing downtime for critical equipment.

Increase Equipment Life Cycle

Industrial Lubricants and Cleaners



Reduce downtime due to unnecessary bearing replacement or machinery rebuilds with Chesterton QBT™ (Quiet Bearing Technology) greases. They are designed to extend the life of rotating assemblies such as wet end rollers, dryer rolls, thickeners, washers, fans, blowers, and electric motors. Chesterton offers a range of water- and solvent-based cleaners and degreasers perfect for your cleaning and maintenance needs.

Easy to install, set, and maintain, Lubri-Cup™ Automatic Lubricant Dispensers deliver the right amount of high performance lubricant at exact intervals to maintain equipment effortlessly.

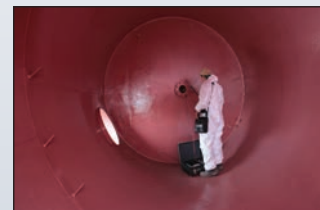


Repair Aging Equipment and Structures



Protect Your Assets

- Trowelable and brushable ceramic-reinforced composite coatings for severe sliding abrasion and impact service typically associated with high-wear zones in materials-handling equipment and structures
- Rebuild and protect concrete with quartz-reinforced resurfacers and composite coatings
- Protect vessels and structures against severe corrosion and erosion with sprayable protective linings



Have Peace of Mind

CHESTERTON WATER MANAGEMENT PROGRAM

As your business partner, Chesterton Specialists work with you to identify specific improvement opportunities and develop a tailored action plan for water use reduction. A data-oriented approach to reducing water usage can result in dramatic savings in today's business environment.

- Comprehensive water usage survey to identify immediate areas of focus
- Detailed reporting outlining the financial impact of excessive water use at equipment and plant levels
- Recommendations for specific sealing solutions with related cost savings due to water usage reduction
- Training programs relating to product selection, installation, maintenance, and operation techniques



EQUIPMENT REPAIR SERVICES TO KEEP YOUR MACHINERY RUNNING 24/7

Incorporating industry knowledge and technical expertise supported with a field service team, Chesterton offers a one-stop shop for consultative and equipment repair services. Our trained, certified technicians deliver a wide range of specialized field services that focus on safety and compliance.



- On-site field services
- Pump repair and optimization
- Mechanical seal repair
- High performance industrial coating services
- Cylinder repair
- Flange sealing repair



Global Solutions, Local Service

Since its founding in 1884, the A.W. Chesterton Company has successfully met the critical needs of its diverse customer base. Today, as always, customers count on Chesterton solutions to increase equipment reliability, optimize energy consumption, and provide local technical support and service wherever they are in the world.

Chesterton's global capabilities include:

- Servicing plants in over 113 countries
- Global manufacturing operations
- More than 500 Service Centers and Sales Offices worldwide
- Over 1200 trained local Service Specialists and Technicians

Visit our website at chesterton.com



Chesterton ISO certificates available on chesterton.com/corporate/iso

SpiralTrac® is a registered trademark of EnvrioSeal Engineering Products Ltd.

Chesterton Connect™, Lubri-Cup™, and QBT™ are trademarks of A.W. Chesterton Company.

Technical data reflects results of laboratory tests and is intended to indicate general characteristics only. A.W. Chesterton Company disclaims all warranties expressed, or implied, including warranties of merchantability and fitness for a particular purpose or use. Liability, if any, is limited to product replacement only. Any images contained herein are for general illustrative or aesthetic purposes only and are not intended to convey any instructional, safety, handling or usage information or advice respecting any product or equipment. Please refer to relevant Safety Data Sheets, Product Data Sheets, and/or Product Labels for safe use, storage, handling, and disposal of products, or consult with your local Chesterton sales representative.

Distributed by:

© 2023 A.W. Chesterton Company

® Registered trademark owned by A.W. Chesterton Company
in USA and other countries, unless otherwise noted.



A.W. Chesterton Company
860 Salem Street
Groveland, MA 01834 USA

Telephone: 781-438-7000
Fax: 978-469-6528
chesterton.com

Form No. EN601762
Pulp and Paper
Brochure
11/23